



## Course Director:

**Alan B. Copperman, MD**

Division Director of Reproductive Endocrinology and Infertility and Clinical Professor of Obstetrics, Gynecology and Reproductive Science at the Icahn School of Medicine at Mount Sinai, Managing Director, RMA of New York

# Fertility Today:

## The Latest Advancements in Reproductive Medicine

### Live/Hybrid Program

**Wednesday, September 23, 2026 | 7:30am - 1:30pm**

**Goldwurm Auditorium**

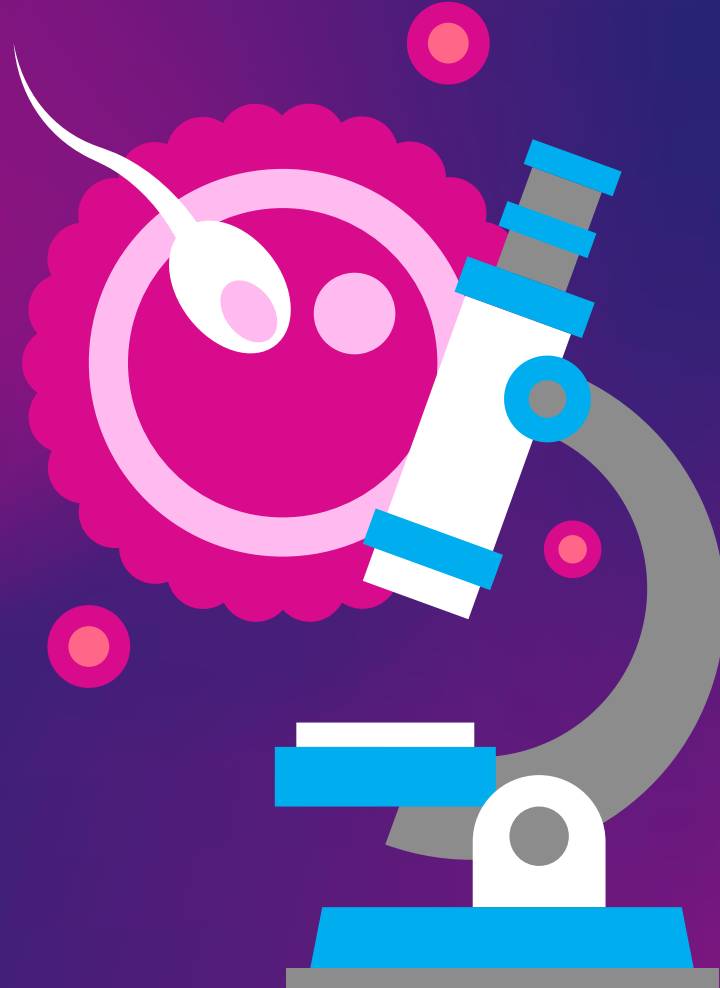
1425 Madison Avenue, New York NY 10029

<https://mssm.cloud-cme.com/FertilityDay>

## CME Course Description:

This half-day CME event is hosted by the Department of Obstetrics, Gynecology, and Reproductive Science at the Icahn School of Medicine at Mount Sinai in partnership with RMA of New York, and will present a comprehensive update on fertility care. Designed for OB/GYNs, women's health providers, primary care physicians, and oncologists, the course will cover the latest advancements and research in **reproductive endocrinology, fertility preservation, recurrent pregnancy loss, oncofertility, LGBTQIA+ family-building, genetics, and mental health.**

Through expert-led talks, patient stories, and clinical insights, attendees will understand the latest treatment options available to patients and gain practical guidance on when and how to counsel patients, and when to refer to specialists.



# Fertility Today:

## The Latest Advancements in Reproductive Medicine

Live/Hybrid Program



## Agenda

TIME (Eastern)	TOPIC	SPEAKER(S)
7:00-8:10 AM	Registration and Breakfast	
8:10-8:15 AM	Introduction and Welcome	Alan Copperman, MD
8:15-9:00 AM	A Patient Story: Recurrent Miscarriage The Latest Research, Treatment Options, & Outcomes	Ashley (Patient) Lucky Sekhon, MD & Joanne Stone, MD
9:00-9:30 AM	The Fertility Workup	Chelsea Cannon, MD
9:30-10:15 AM	Fertility Preservation Options & Embryology Lab Overview	Jenna Friedenthal, MD & Rick Slifkin, MSTS(ABB), CLT(NYS)
10:15-10:45 AM	<b>BREAK</b>	
10:45-11:15 AM	Oncofertility (Fertility Preservation for Patients Facing Cancer & Cancer-Risk)	Taraneh Nazem, MD
11:15 AM-12:00 PM	Genetics & Fertility	Teresa Cacchione, MS, CGC & Devora Aharon, MD
12:00-12:30 PM	LGBTQIA+ Family-Building	Anate Brauer, MD
12:30-1:00 PM	Fertility, Wellness, & Mental Health	Georgia Witkin, PhD & Robert Setton, MD
1:00-1:30 PM	GLP-1s, Fertility, & Gut-Health	Tia Jackson-Bey, MD & Stephanie Gold, MD
1:30-1:35 PM	Conclusion	Alan Copperman, MD

# Fertility Today: The Latest Advancements in Reproductive Medicine

## Live/Hybrid Program



## Faculty

### Course Director

#### **Dr. Alan Copperman**

Division Director of Reproductive Endocrinology and Infertility and Clinical Professor of Obstetrics, Gynecology and Reproductive Science at the Icahn School of Medicine at Mount Sinai, Managing Director, RMA of New York

### Faculty

#### **Dr. Lucky Sekhon**

Assistant Clinical Professor in the Raquel and Jaime Gilinski Department of Obstetrics, Gynecology and Reproductive Science, Icahn School of Medicine Reproductive Endocrinologist and Fertility Specialist, RMA of New York

#### **Dr. Chelsea Canon**

Reproductive Endocrinologist and Fertility Specialist, RMA of New York

#### **Dr. Jenna Friedenthal**

Assistant Clinical Professor in the Raquel and Jaime Gilinski Department of Obstetrics, Gynecology and Reproductive Science, Icahn School of Medicine Reproductive Endocrinologist and Fertility Specialist, RMA of New York

#### **Rick Slifkin, MS TS(ABB), CLT(NYS)**

Clinical Embryology Associate Laboratory Director, RMA of New York

#### **Dr. Taraneh Nazem**

Assistant Clinical Professor in the Raquel and Jaime Gilinski Department of Obstetrics, Gynecology and Reproductive Science, Icahn School of Medicine Reproductive Endocrinologist and Fertility Specialist, RMA of New York

#### **Teresa Cacchione, MS, CGC**

Genetic Counselor, RMA of New York

#### **Dr. Devora Aharon**

Assistant Clinical Professor in the Raquel and Jaime Gilinski Department of Obstetrics, Gynecology and Reproductive Science, Icahn School of Medicine Reproductive Endocrinologist and Fertility Specialist, RMA of New York

#### **Dr. Anate Brauer**

Assistant Clinical Professor in the Raquel and Jaime Gilinski Department of Obstetrics, Gynecology and Reproductive Science, Icahn School of Medicine Reproductive Endocrinologist and Fertility Specialist, RMA of New York

#### **Dr. Georgia Witkin**

Assistant Clinical Professor in the Raquel and Jaime Gilinski Department of Obstetrics, Gynecology and Reproductive Science, Icahn School of Medicine Assistant Clinical Professor, Department of Psychiatry, Icahn School of Medicine Director, Stress Research Program, Icahn School of Medicine Director of Psychological Services, RMA of New York

#### **Dr. Robert Setton**

Assistant Clinical Professor in the Raquel and Jaime Gilinski Department of Obstetrics, Gynecology and Reproductive Science, Icahn School of Medicine Reproductive Endocrinologist and Fertility Specialist, RMA of New York

#### **Dr. Tia Jackson-Bey**

Assistant Clinical Professor in the Raquel and Jaime Gilinski Department of Obstetrics, Gynecology and Reproductive Science, Icahn School of Medicine Reproductive Endocrinologist and Fertility Specialist, RMA of New York

#### **Dr. Stephanie Gold**

Instructor of Medicine, Icahn School of Medicine Gastroenterologist, Mount Sinai Hospital

### Faculty Disclosure Policy

It is the policy of the Icahn School of Medicine at Mount Sinai to ensure objectivity, balance, independence, transparency, and scientific rigor in all accredited CE educational activities. All individuals in control of content of an activity accredited by ISMMS are expected to disclose all their financial relationships with ineligible companies existing within the prior 24 months. Relevant financial relationships are mitigated and disclosed to learners before the activity takes place. All relevant financial relationships have been mitigated.

# Fertility Today: The Latest Advancements in Reproductive Medicine

Live/Hybrid Program



## Overview

### Program Overview

This one-day CME course offers a comprehensive update on key topics in fertility care, including recurrent pregnancy loss, fertility preservation, oncofertility, genetics, and LGBTQIA+ family-building. Led by experts from the Department of OB/GYN at Mount Sinai and RMA of New York, the program combines clinical insights with patient perspectives to equip providers with practical tools for patient counseling and referral. Attendees will leave with up-to-date knowledge to better support patients on their reproductive journeys.

### Learning Objectives

Describe recent advances in reproductive endocrinology, fertility preservation, recurrent pregnancy loss, oncofertility, LGBTQIA+ family-building, genetics, and mental health in fertility care, and when they should be appropriately utilized.

Apply diagnostic criteria and appropriate workup strategies for common REI presentations, improving diagnostic confidence and preparedness to manage these cases in practice.

Interpret results of reproductive hormone testing and integrate evidence-based fertility guidelines into clinical decision-making to ensure timely and appropriate referrals for specialized care.

### Target Audience

Ob/Gyn  
Obstetrics  
Gynecology  
Oncology  
Primary Care Physician  
Internal Medicine

### Accreditation

The Icahn School of Medicine at Mount Sinai is accredited by the Accreditation Council for Continuing Medical Education (ACCME) to provide continuing medical education for physicians.

### Credit Designation

The Icahn School of Medicine at Mount Sinai designates this live activity for a maximum of 4.5 *AMA PRA Category 1 Credits™*. Physicians should claim only the credit commensurate with the extent of their participation in the activity.

### Verification of Attendance

Verification of attendance will be provided to all professionals.

### Special Needs

The Icahn School of Medicine at Mount Sinai is in full compliance with provisions of the Americans with Disabilities Act (ADA) and is accessible for individuals with special needs. If you require special accommodations, email the Office of CME at [cme@mssm.edu](mailto:cme@mssm.edu).

# Fertility Today: The Latest Advancements in Reproductive Medicine

Live/Hybrid Program



## Program Registration

### Online Registration

<https://mssm.cloud-cme.com/FertilityDay>

---

### Fee Schedule

Live ( In Person Only) – \$25.00

Live Virtual Streaming – \$25.00

### Fertility Today Information

Email: [cme@mssm.edu](mailto:cme@mssm.edu)

### Cancellation Policy:

All refund and cancellation requests must be emailed to the CME office at [cme@mssm.edu](mailto:cme@mssm.edu) by September 15, 2026. Cancellations after this date are not eligible for a refund.